



GAS MONITOR


MX 32

CH₄, CO, O₂, H₂S


CO₂, NH₃, Cl₂, O₃, NO, H₂, HCN, SiH₄

 1 or 2 independent channels

 Easy installation

 Flexible programming

 Wall mounted

 Compliant with European Standards



OLDHAM

*Your environment, your safety,
let's master them together*

CE ATEX

Together we'll make your operations safe



Example: print industry

OLDHAM has designed the **MX32**, a measurement and alarm unit that is perfectly suitable for the protection of your equipment and personnel in atmospheres which may contain flammable and toxic gases. Available with one or two separate channels, the **MX32** offers you tailor-made detection capabilities and exceptional programming possibilities with its range of **OLDHAM** detectors.

Its purchase and operating costs are enhanced by its easy installation and great operating flexibility.

2 in 1 performance

The **MX32** measurement and alarm unit for the detection of combustible or toxic gases is, in fact, a "dual single-channel" system. It is available with one measuring channel and an extension. This operating flexibility ensures the protection of your personnel and your plant.

⊕ INCREASED SAFETY

The **MX32** is equipped with two independent, instantaneous alarm thresholds.

⊕ REMARKABLE RELIABILITY

SMC and microcontroller technologies guarantee the quality of measurement processing, the user interface and the triggering of alarms.

Protection against electromagnetic interference is built in.

⊕ COMPLIANCE WITH STANDARDS

The **MX32** complies with European standards 50054, 50081, 50082 and with low-voltage directives.



Enhanced ergonomics

⊕ USER-FRIENDLY FRONT PANEL

- "Power on" indicator lights
- Buzzer
- Manual or automatic acknowledgement
- 3 control keys

⊕ VARIETY OF CONNECTIONS

- Wheatstone bridge detectors
- 4-20 mA detectors (2 or 3 wires)
- Fire detectors
- Flame detectors

⊕ EASY INSTALLATION

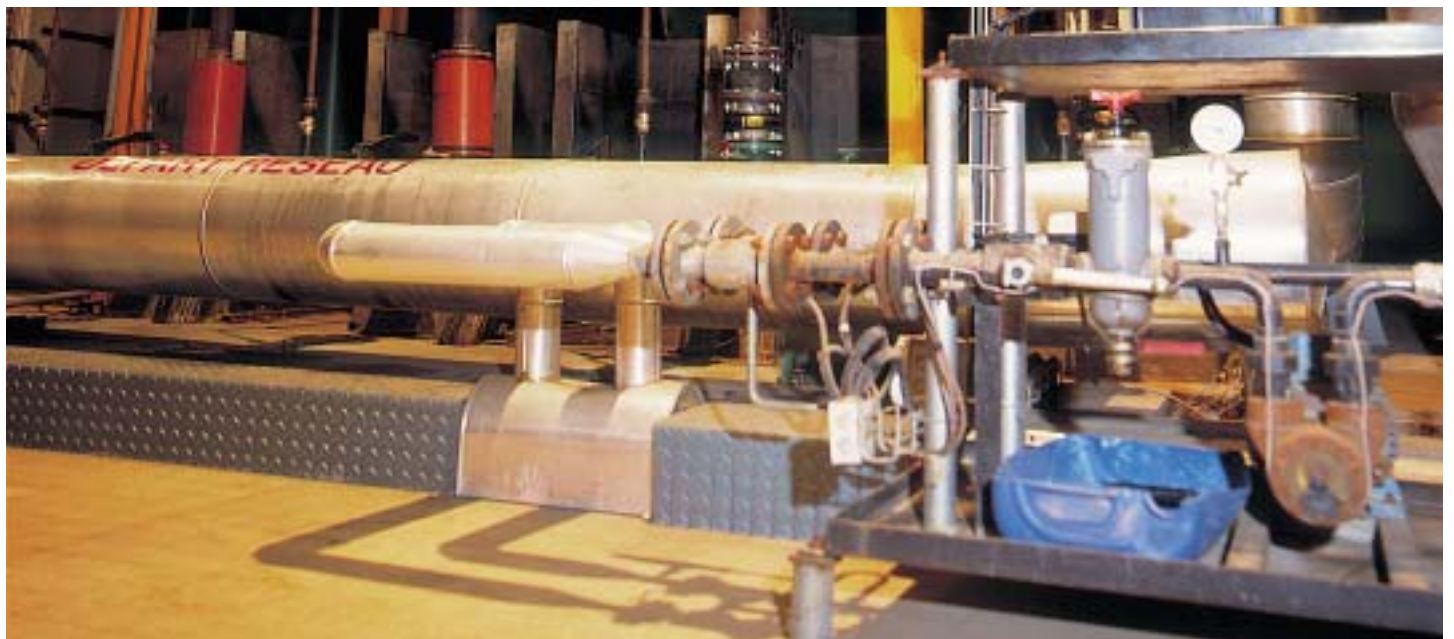
- Small-sized wall-mounted box, that is easy to install
- Protected front face
- Sealed polycarbonate box (IP 66)

⊕ SIMPLE OPERATION

- Liquid crystal display panel
- Simple programming by keypad
- Power supply 230 V AC or 115 V AC (24 V DC back-up)

⊕ HIGH SAFETY

- Visual alarms
- Red LED for two gas alarm thresholds per channel
- Yellow LED for fault alarm per channel



Example of application : boiler plant

TECHNICAL CHARACTERISTICS

MANUFACTURER :	• OLDHAM SA
FUNCTION :	• Gas monitor
PRESENTATION :	• Wall-mounted box, Noryl type
CAPACITIES :	• 1 or 2 channels
MEASUREMENT :	• Continuous
DISPLAY :	• Liquid crystal, fixed or scrolling
ALARMS :	<ul style="list-style-type: none"> • 2 independent alarm thresholds per channel • Individual programming, by increasing or decreasing • Manual or automatic acknowledgement
VISUAL ALARMS :	<ul style="list-style-type: none"> • 2 red LED + gas alarms per channel • 1 yellow LED fault per channel
AUDIO ALARM :	• Buzzer
RELAYS :	<ul style="list-style-type: none"> • 2 gas alarm relays per channel • One common relay for faults • Type of contact : NO or NC, programmable by jumpers
POWER SUPPLY :	<ul style="list-style-type: none"> • 115 V or 230 V AC • 24 V DC
POWER CONSUMPTION :	• 30 W
RELAY MAX. RESISTIVE BREAKING CAPACITY :	• 2 A / 230 V AC / 30 V DC
WEATHER PROTECTION :	• IP 66

DETECTOR CONNECTIONS PER CHANNEL

BRIDGE TYPE :	<ul style="list-style-type: none"> • 1 detector : maximum distance 300 m (3 x 1,5 mm²) • 2 detectors : utilization of a junction box (Please consult us)
----------------------	---

DETECTOR WITH TRANSMITTER :	<ul style="list-style-type: none"> • One to five 2-wire detectors, 4-20 mA • One 3-wire detector, 4-20 mA • Cable 3 x 1.5 mm² (32 Ω max. in loop mode)
------------------------------------	--

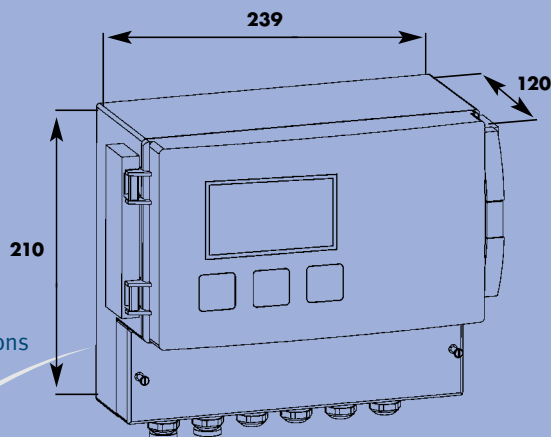
FIRE DETECTORS :	<ul style="list-style-type: none"> • One to five detectors : cable 2 x 0.65 mm²
-------------------------	---

FLAME DETECTORS :	<ul style="list-style-type: none"> • One 3-wire detector • Cable 3 x 1.5 mm² (4,8 Ω max. in loop mode)
--------------------------	---

MISCELLANEOUS

WEIGHT :	• 1,750 g
ACKNOWLEDGEMENT :	• Manual or automatic
OPERATING TEMPERATURE :	• -20°C to +55°C
RELATIVE HUMIDITY :	• 5% to 95% RH

COMPLIES WITH EMC AND LOW-VOLTAGE DIRECTIVES



Subject to operation conditions

OLDHAM

DETECTION GAZ / MESURE A L'EMISSION
GAS DETECTION / STACK GAS MONITORING

Plant and head office : Z.I. Est - rue Orfila

B.P. 417 - 62 027 ARRAS Cedex FRANCE

Tel. : 33 3 21 60 80 80 Fax : 33 3 21 60 80 00

Web site : <http://www.oldham.fr>



Your agent or retailer