

Figure No. 6610-6613

**TWO WAY FLUSH STYLE HYDRANT**

An Auxiliary Outlet Connection for Fire Dept. Use

**STANDARD EQUIPMENT:** Cast brass body with brass wall plate; outlet adapters; caps and chains. **SPECIFY THREAD.**

**BRANDING:** "Wall Hydrant". Special lettering available.

**OPTIONAL FINISH:**

- PB - Polished Brass
- PC - Polished Chrome Plated

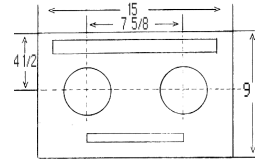


Diagram of Plate

Figure No.	SIZE	TYPE	A	B	C	D	E	F	G	H
6610	4 X 2 1/2 X 2 1/2	STR	11 1/2	6 1/2	7 5/8	5 1/4				
*6611	4 X 2 1/2 X 2 1/2	ANGLE					12	5 3/8	7 5/8	4
6612	6 X 2 1/2 X 2 1/2	STR	11 1/4	7 3/8	7 5/8	7 1/4				
6613	6 X 2 1/2 X 2 1/2	ANGLE					12	9 3/8	7 5/8	5 3/4

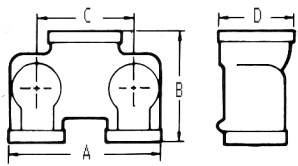


Diagram of Back Body

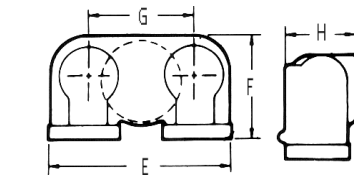
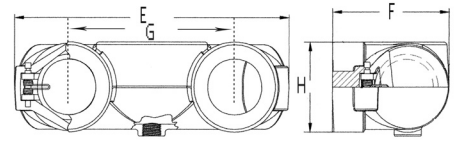


Diagram of Bottom & Top Body



\*Diagram of Bottom & Top Body

**THREE-WAY FLUSH STYLE HYDRANT**

An Auxiliary Outlet Connection for Fire Dept. Use

**STANDARD EQUIPMENT:** Cast brass body with brass wall plate; outlet adapters; caps and chains. **SPECIFY THREAD.**

**BRANDING:** "Wall Hydrant". Special lettering available.

**OPTIONAL FINISH:**

- PB - Polished Brass
- PC - Polished Chrome Plated

Figure No. 6615 6" X 2 1/2" X 2 1/2" X 2 1/2"-Straight Body

Figure No. 6616 6" X 2 1/2" X 2 1/2" X 2 1/2"-Angle Body

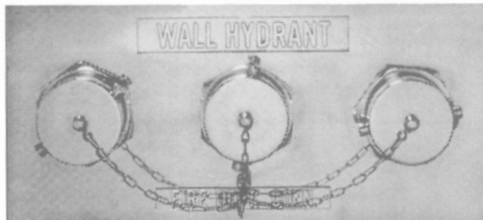


Figure No. 6615

**SINGLE HYDRANT**

An Auxiliary Outlet Connection for Fire Dept. Use

**STANDARD EQUIPMENT:** Cast brass round wall plate with outlet adapter, cap and chain. **SPECIFY THREAD.**

**BRANDING:** "Wall Hydrant"



Figure No. 6622-6623

Figure No.	Size	Type
6622	2 1/2 X 2 1/2	ROUND
6623	3 X 2 1/2	PLATE

**OPTIONAL FINISH:**

- PB- Polished Brass
- PC- Polished Chrome Plated